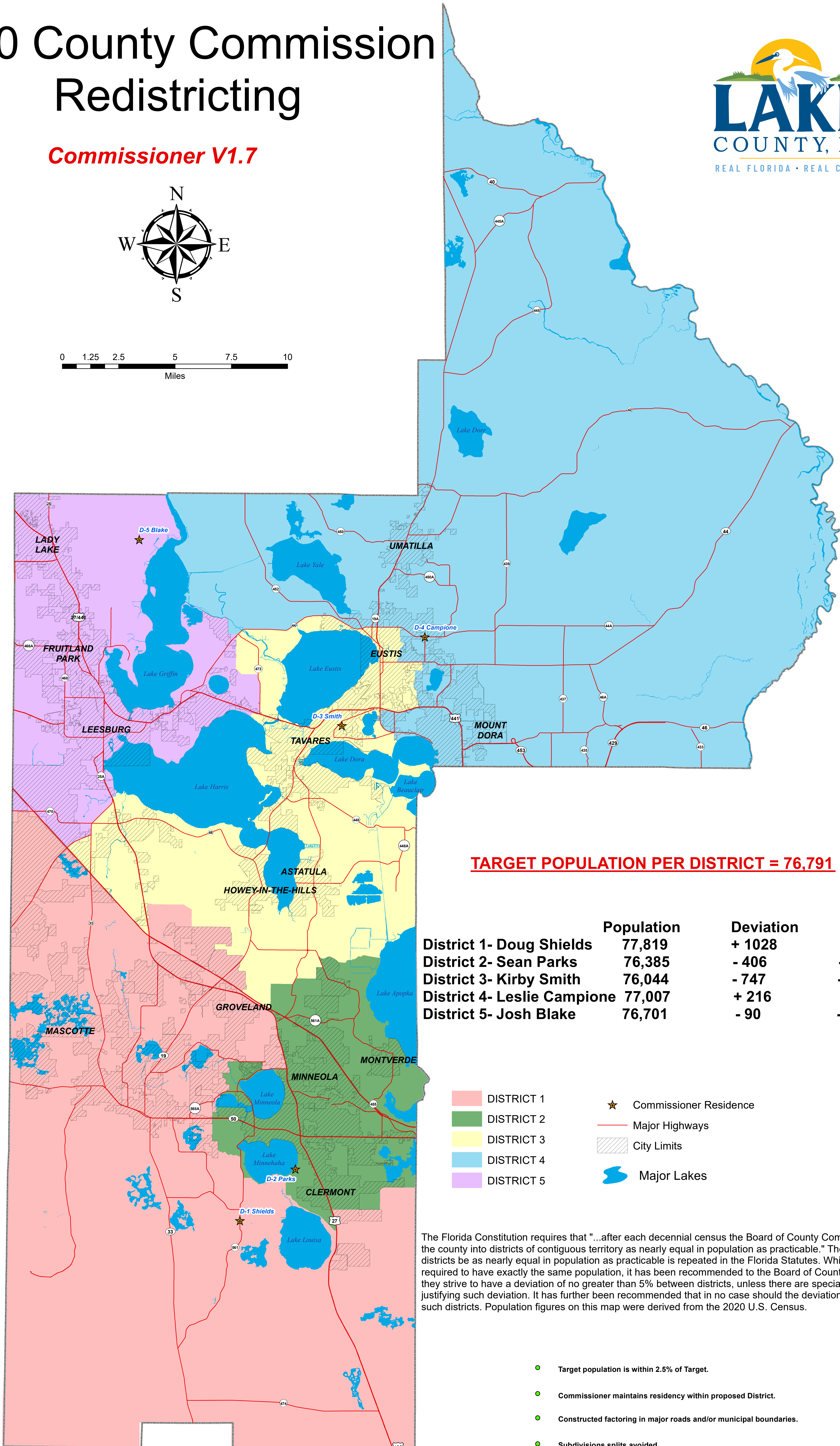
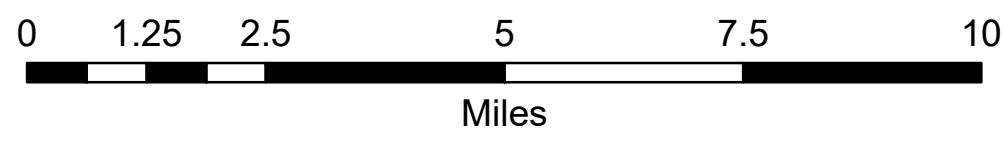
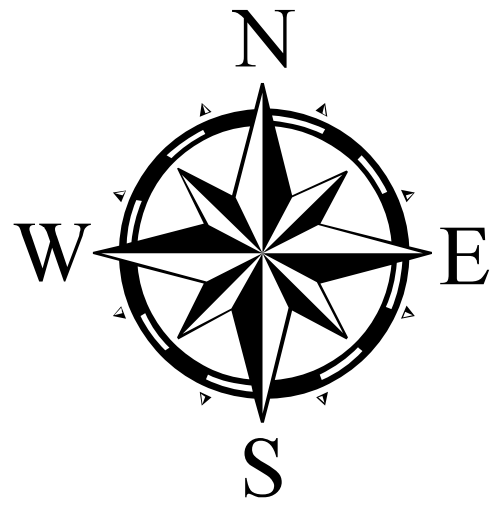


2020 County Commission Redistricting

Commissioner V1.7



TARGET POPULATION PER DISTRICT = 76,791

	Population	Deviation	Percent
District 1- Doug Shields	77,819	+ 1028	1.34%
District 2- Sean Parks	76,385	- 406	-.53%
District 3- Kirby Smith	76,044	- 747	-.97%
District 4- Leslie Campione	77,007	+ 216	.28%
District 5- Josh Blake	76,701	- 90	-.12%

- DISTRICT 1
- DISTRICT 2
- DISTRICT 3
- DISTRICT 4
- DISTRICT 5
- ★ Commissioner Residence
- Major Highways
- ▨ City Limits
- Major Lakes

The Florida Constitution requires that "...after each decennial census the Board of County Commissioners shall divide the county into districts of contiguous territory as nearly equal in population as practicable." The requirement that the districts be as nearly equal in population as practicable is repeated in the Florida Statutes. While the districts are not required to have exactly the same population, it has been recommended to the Board of County Commissioners that they strive to have a deviation of no greater than 5% between districts, unless there are special circumstances justifying such deviation. It has further been recommended that in no case should the deviation exceed 10% between such districts. Population figures on this map were derived from the 2020 U.S. Census.

- Target population is within 2.5% of Target.
- Commissioner maintains residency within proposed District.
- Constructed factoring in major roads and/or municipal boundaries.
- Subdivisions splits avoided.